



**Sullivan County
Rural Electric Cooperative**

A Touchstone Energy® Cooperative



RIGHT-OF-WAY MANAGEMENT



To help ensure Sullivan County Rural Electric Cooperative provides its members with the most reliable power at the lowest possible cost, we maintain our rights-of-way to keep our lines clear and power flowing to our members.

PURPOSE

The ultimate purpose of pruning and removing trees near our lines is to minimize electrical hazards and reduce power interruptions.

RIGHT OF WAY

To ensure reliable electrical service to our members, we have either acquired or been granted a legal right to access lands owned by other parties in order to change or maintain our facilities. The right to access these lands for such purposes is called an easement and is often referred to as a "right of way."

Easements, which are legal contracts, are kept on file at Sullivan County Rural Electric Cooperative (SCREC). All easements acquired after 2023 are now recorded at the corresponding county's courthouse.

These easements were signed by the landowner when the line was first built and convey from property owner to property owner in perpetuity.



TREES ARE THE LEADING CAUSE OF ELECTRICAL POWER OUTAGES.

Sufficient clearance is required to reduce the potential for damage to power lines and decrease the likelihood of outages during storms. Using industry best practices, SCREC's operations department will determine which trees need trimmed or cut to keep the electric lines free of interference. They will take into account vegetation growth during an eight to nine year cycle and hazard vegetation.

SCREC employees patrol our lines to ensure our rights-of-way are maintained by making note of foliage growing in proximity to our power lines, vines, and hazard trees that could cause damage to our equipment if they were to fall. We hope to avoid any future problems by thinking ahead, considering how branches may grow over time and how seasonal change will affect residential trees.

Our operations department assesses each situation to determine the best approach to prevent trees from interfering with electrical facilities. Based on this assessment, crews may use power saws, DEP-approved herbicides, mechanical equipment, or a combination of control methods.

SCREC utilizes a professional line clearance contractor to trim and/or clear trees and brush away from the electrical line.

WOOD DEBRIS

All trees and cut wood are owned by the member. SCREC has the right to maintain trees within the right of way or trees that may damage the overhead line.

Generally larger wood and debris that results from line clearance is left on the site for use by the landowner. Smaller wood and debris is usually mulched on the site in areas that are not currently maintained by the landowner.

SCREC's line clearance contractor does clean up wood and debris from areas that are currently maintained (mowed lawns, food plots, fields, driveways, etc.).

SCREC or its line clearance contractor does not clean up trees or limbs that fall due to natural causes (weather, dead/dying trees, diseased trees). These are the member's responsibility for removal and wood/debris will be left at the side without additional cutting or mulching.



HOMEOWNER RESPONSIBILITIES

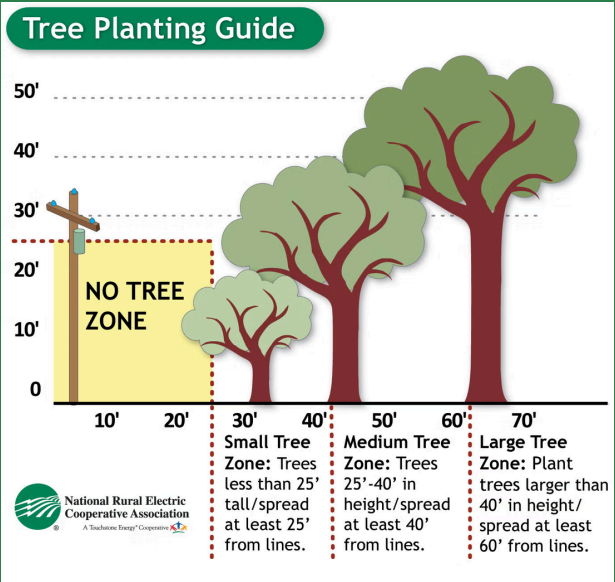
If you plan on planting a tree on your property, remember to consider how tall it might grow and how wide its branches may spread. See the tree planting chart on the outside of this brochure, or visit www.screc.com/trees.

While it may not always be convenient to have trees on your property trimmed by our contractor, please be understanding of the fact that Sullivan County Rural Electric Cooperative (SCREC) has a responsibility to ensure safe and reliable electricity to our members by keeping our power lines free from interference. One tree can end up affecting the power quality for hundreds of your neighbors by causing power blinks or outages.

Your service drop, or the line that runs from the utility pole to your home, is your individual connection to the power grid, and SCREC does not trim for clearance around these lines. SCREC will only trim a service drop if limbs are touching the line between your home and the utility pole. Keeping branches and other bushes away from these lines can prevent an outage or other electrical problems. Because these are energized lines, we highly recommend using a licensed and insured tree trimming service to perform the work.

If you have a question regarding trees, please email info@screc.com or call our office at 570-924-3381.

If possible, please include specifics of where the trees are located (address, pole number, account name/number) or pictures of the trees in question. It will help our operations department answer your inquiry more quickly.



www.screc.com



info@screc.com



Office: 570-924-3381

Outage: 570-924-3418

THANK YOU FOR YOUR
COOPERATION